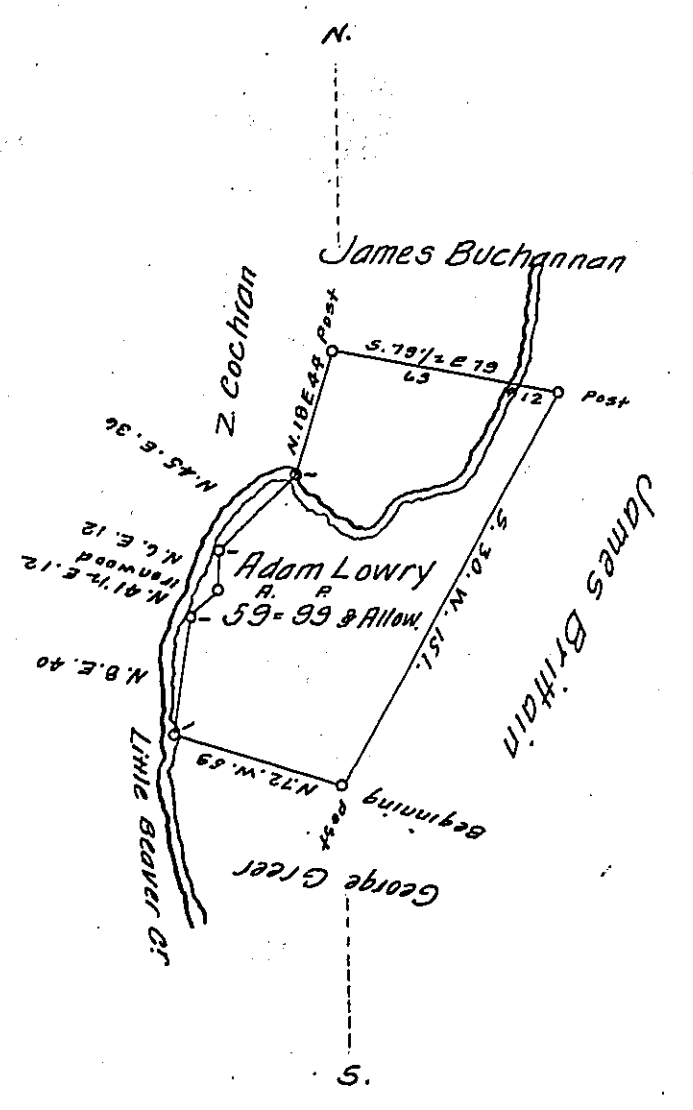


Lawrence. 127
S. E. Part of ✓
C-33-111.



The above Draught represents a tract of land Surveyed June 12th 1838
for Adam Lowry. in pursuance of his Actual Settlement and Imp-
rovement- Situate in Big Beaver Township Beaver County Pa.-
adjoining lands as Above- Containing 59 acres. 99 perches and
Allowance of Six per cent.

John Taylor Esq^r }
Surveyor General }

W^m McCallister D.S.

IN TESTIMONY that the above is a copy of the original remaining on file in
the Department of Internal Affairs of Pennsylvania, made
conformably to an Act of Assembly approved the 16th day of
February, 1833, I have hereunto set my Hand and caused
the Seal of said Department to be affixed at Harrisburg,
this third day of September 1907.

Henry Howell
Secretary of Internal Affairs.